



TUSCOLA COUNTY DRAIN COMMISSIONER

Robert Mantey
125 W. Lincoln Street
Caro, Michigan 48723

GOODRICH MILL CREEK DRAIN

**NOTICE OF DAY OF REVIEW OF DRAINAGE DISTRICT BOUNDARIES
AND REVIEW OF APPORTIONMENTS**

- DATE:** **Wednesday, June 26, 2019**
- TIME:** **9:00 a.m. – 5:00 p.m.**
- LOCATION:** **Tuscola County Drain Commissioner's Office
Purdy Building, Suite 100
125 W. Lincoln Street
Caro, Michigan 48723**
- QUESTIONS:** **(989) 863-4015**
Please leave a detailed voicemail. All calls are returned in the order received.

The Day of Review is an opportunity to review the Goodrich Mill Creek Drain Drainage District boundaries and apportionment of benefit with the Drain Commissioner or a staff member. A map of the proposed Drainage District boundary revisions can be found on the reverse side of this notice and on the Drain Commissioner's website at: <https://www.tuscolacounty.org/drain/>.

The Drain Commissioner, engineers and/or other staff members will be available to assist individuals throughout the day and make revisions where necessary. There is no need to schedule an appointment for a specific time on the Day of Review. The computation of costs for the Drain will also be available at the Day of Review. Drain assessments are collected in the same manner as property taxes and will appear on your winter tax bill. If drain assessments are being collected for more than one (1) year, you may pay the assessment in full with any interest to date at any time and avoid further interest charges.

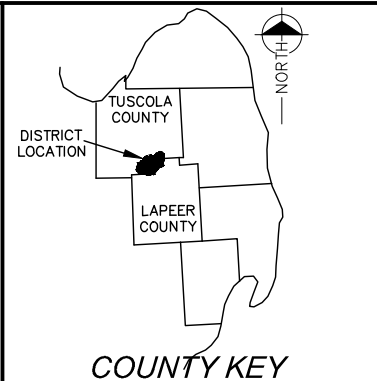
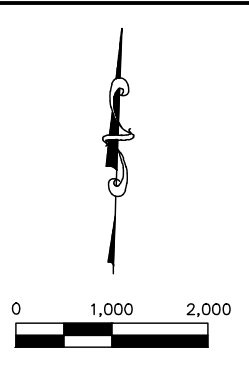
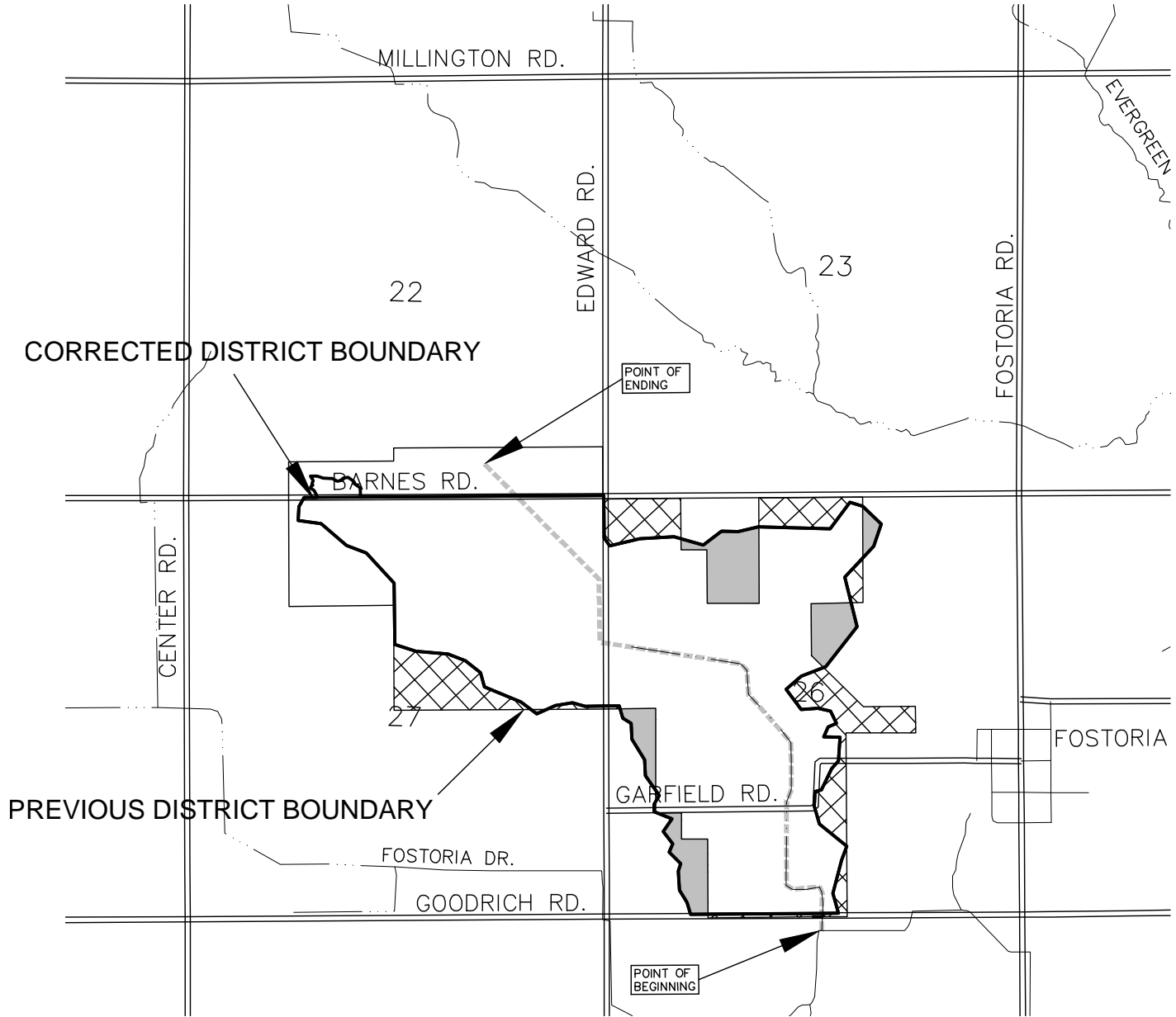
Persons with disabilities needing accommodations for effective participation in the Day of Review should contact the Drain Commissioner's Office at the number noted above (voice) or through the Michigan Relay Center at 7-1-1 (TDD) at least 24 hours in advance of the Day of Review to request mobility, visual, hearing or other assistance.

You may appeal the Drain Commissioner's decision to revise the district boundary to the Tuscola County Circuit Court within ten (10) days, and you may also appeal the determination of apportionments to the Tuscola County Probate Court within ten (10) days.








GOODRICH MILL CREEK DRAIN LANDS ADDED AND REMOVED DRAINAGE DISTRICT

TUSCOLA COUNTY DRAIN COMMISSIONER
ROBERT MANTEY

2.3 MILES TOTAL



LEGEND

	DRAINAGE DISTRICT BOUNDARY
	DRAIN
	MUNICIPAL BOUNDARIES
	COUNTY BOUNDARIES
	ROADS
	LANDS PROPOSED TO BE ADDED
	LANDS PROPOSED TO BE REMOVED